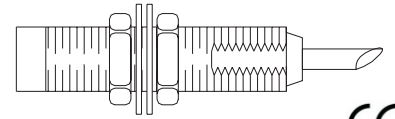
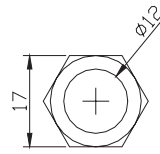


CYLINDRICAL TYPE PROXIMITY SWITCH

TM-12

FEATURES

- PBT material and brass nickel plated housing
- Plug socket optional, easily installation
- Detecting distance: 2 mm / 4 mm



ORDER INFORMATION: TM-12 [Code 1] [Code 2] - [Code 3]

Code 1	Detecting Distance
02	2 mm
04	4 mm

Code 2	Output Type
NO	NPN Normal Open
NC	NPN Normal Close
PO	PNP Normal Open
PC	PNP Normal Close
AO	AC Normal Open
AC	AC Normal Close

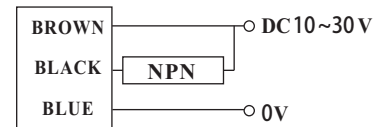
Code 3	Wire Type
Empty	2 M Wire
C	M12 Connector
P	Plug Socket
O	Option

SPECIFICATION

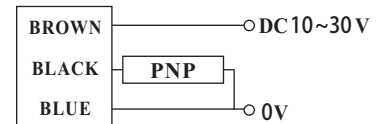
- ◆ Max. Detecting Distance: 1202: 2 mm $\pm 10\%$ / 1204: 4 mm $\pm 10\%$
- ◆ Stable Detecting Distance: 1202: 0~1.6 mm / 1204: 0~3.2 mm
- ◆ Standard Detecting Object: Iron 12 x 12 x 1t
- ◆ Hysteresis: 15% of operating distance
- ◆ Repetitive Accuracy: $\pm 10\%$
- ◆ Circuit Protection: Polarity circuit protection
- ◆ Power Supply: DC 10~40V; AC 24~240V
- ◆ Load Current: 150 mA max.
- ◆ Response Frequency: 800 Hz; 30 Hz (AC power)
- ◆ Operating Indicator: Red LED
- ◆ IP Protection: IP67
- ◆ Vibration Resistance: 10~55Hz, 1.5mm X, Y, Z for 2 hours
- ◆ Shock Resistance: 500m/s (50g), X, Y, Z for 3 times
- ◆ Operating Temperature: -25~70°C
- ◆ Operating Humidity: 35~80% RH (non-condensing)
- ◆ Storage Temperature: -30~80°C
- ◆ Storage Humidity: 35~95% RH (non-condensing)
- ◆ Housing Material: PBT material & brass nickel plated
- ◆ Wire Material: PVC cable, 2 M wire length
- ◆ Weight: About 90g

WIRING CONNECTION

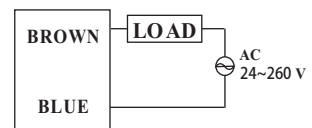
● NPN Output



● PNP Output

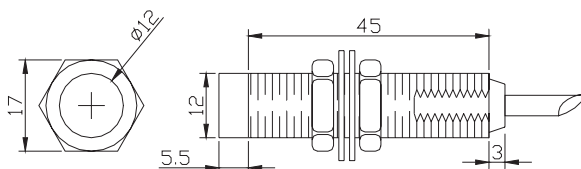


● AC Power

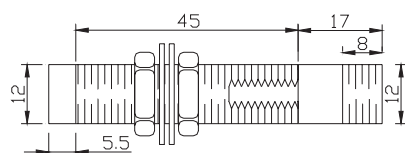


DIMENSION

● Directly Wire



● M12 Connector



● Plug Socket

